



# WASTE INFRASTRUCTURE

## CAPABILITY STATEMENT

### OUR PRIORITIES

#### QUALITY

Quality underpins everything that we do, from our skilled operators and experienced teams to our client relations and award-winning project outcomes. Hazell Bros operates under fully certified quality, occupational health and safety and environmental management systems, and we continually improve our quality practices to achieve the best possible standard in the industry.

#### ENVIRONMENT

Protecting the natural environment is a priority at Hazell Bros. We work closely with local communities and project stakeholders to actively address any environmental concerns and seek to minimise our impact through innovative programming and practices. All our work meets a minimum of ISO 14001:2004 standards and environmental assessments are built into every project that we undertake.

#### POSITIVE COMMUNITIES

Supporting the communities in which we live, work, and operate is part of the Hazell Bros way. Our dedicated Community Liaison Officers play an important role connecting our projects to the people that will benefit from them for years to come. From sponsoring local sporting clubs to our Local Participation Policy for workers and subcontractors, we strive to always leave a positive impact and give back to the communities where we work.

#### SAFETY

A culture of safety first, always works is built into every aspect of our business, ensuring our people return home safely from work, every day and are guided by the principles and behaviours of Life Saving Choices. Our safety system is third party certified to AS/NZS 4801:2001 and accredited by the Federal Safety Commissioner. It complements our Fit for Work, Fit for Life philosophy which provides dedicated initiatives for employees to access activities and services to improve their personal health and wellbeing.

#### PEOPLE & DEVELOPMENT

Hazell Bros maintains a strong commitment to the training and professional development of our people, from an established trainee and apprenticeship program to tertiary education opportunities. Employees are encouraged and supported to upskill and cross-skill with nationally accredited training to ensure the highest standard of work and career development for each individual across the organisation.





**\$180M+** IN CONSTRUCTION PROJECTS ANNUALLY

PRIVATE  
SECTOR  
PROJECTS

STATE  
GOVERNMENT  
PROJECTS

LOCAL  
GOVERNMENT  
WORKS



**NATIONAL PRE-QUALIFICATION**  
(R4 B3 F100)

**Since 2010, Hazell Bros has delivered more than \$1.017 billion in infrastructure projects across Queensland and New South Wales.**

With local ownership and management, the 150-strong team of personnel have fast become trusted professionals in construction for both public and private sector clients, providing innovative, clear-cut solutions with safe, effective, and environmentally conscious outcomes.

Wherever we are working across Queensland and New South Wales, the economic input to local community drives every project we deliver – putting the local economy first, every time. We pride our business on providing flexibility and capacity-building opportunities for our suppliers and subcontractors, with a critical focus on supporting remote and regional communities.



Founded in 1944, Hazell Bros is a privately owned Australian company specialising in civil construction and infrastructure, having built a respected name in the industry for continually adding value and exceeding clients' expectations.

## WASTE MANAGEMENT

Hazell Bros has undertaken the construction and management of waste facility projects for some of Australia's largest local government authorities.

Our project teams and machinery have been deployed to upgrade and extend waste and recycling cells in major and regional centres, adhering to the strictest environmental controls. Our product understanding, knowledge, and skill in the installation of geomembrane lining systems allows us to extend our expertise in this field to other resource projects.

Over the past 15 years', Hazell Bros has developed cost effective, high quality and program efficient methodologies and innovations in the construction of landfill liner containment systems to suit the individual needs of its clients and the scope of works. We are proud to be recognised as a consistently high-quality partner for the operational requirements of several government and private entities in the delivery of their waste management infrastructure requirements.

A MEMBER OF  WMRR

 hazellbros



## INDUSTRY RECOGNISED INNOVATION AND ENVIRONMENTAL EXCELLENCE

In 2021, our project at Warwick Landfill, became the backdrop to a waste industry working group. With at least 15 attendees from various Councils

The visit to Warwick Waste Facility was an excellent opportunity to gather the local governments together to show case the Warwick Waste Facility Cell 3 construction project including the types of lining materials and other technologies (e.g. Tele belt handler) now being used in best practice for construction of landfill cells.

Our team described and answered questions regarding the complexities of landfill liner construction, including material sampling and identification, trial welds, testing and deployment methods.

This group consists of Local Governments within the Qld Levy Zone and includes Toowoomba Regional Council, Southern Downs Regional Council, Lockyer Valley Regional Council, South Burnett Regional Council, Western Downs Regional Council, Balonne Regional Council, Maranoa Regional Council and Goondiwindi Regional Council.

Waste personnel from each Council meet periodically (ie 3 - 4 times per year) to collaborate and discuss waste management issues and opportunities to advance the standards for Local Govt's in the region.





## TWMC VERTICAL EXPANSION CELLS 3 AND 4 FOR TOOWOOMBA REGIONAL COUNCIL

### Scope of Works

- Clear and grub the work area and prepare access and haul routes.
- Undertake bulk earthworks including excavation to subgrade, trimming, shaping, drainage controls, bund construction and subbase placement.
- Install biaxial geogrid reinforcement across the cell footprint.
- Place and compact a 300 mm clay liner layer, including moisture conditioning and achieving required grades.
- Install geosynthetic clay liner (GCL) with required overlaps, anchoring and protection measures.
- Install 2.0 mm textured LLDPE geomembrane liner, including welding, testing and QA verification.
- Install protection geotextile and separation geotextiles.
- Construct leachate collection system including drainage aggregate placement, pipework installation, risers and sump works.
- Connect new works into existing Cells A1 and A2 liner systems.
- Complete anchor trench excavation, liner placement and backfilling.
- Place cover soil over batters and complete batter shaping, topsoiling and erosion controls.
- Finalise stormwater measures, road capping, guideposts and surface finishing

>190,000m<sup>3</sup> of earthworks 230,000m<sup>2</sup> of liner placed



### Project Achievements

- Secured and delivered \$2.2M in additional scope without impacting the scheduled completion date for the cell expansion.
- Developed and executed a value-engineering solution that enabled the beneficial reuse of 38,000 m<sup>3</sup> of unsuitable clay, saving the client approximately \$500,000 in imported material costs.
- Completed an 18,000 m<sup>2</sup> BMA hardstand pad within two months of approval, involving 30,000 m<sup>3</sup> of earthworks and placement of 13,000 t of road base to create new all-weather operational area.
- Designed and commenced delivery of a 14,000 m<sup>2</sup> temporary landfill cell capable of storing 40,000 m<sup>3</sup> of waste, ensuring TWMC operations continue uninterrupted while the main expansion is completed.

### Key Personnel

- Technical Expert: Ben Wedlock
- Project Manager: Jared Ferguson
- Construction Manager: Daniel Grundy
- Site Engineer: Cathal McHugh
- Supervisor: Craig Chubin

### Referee

- Clients Representative: Eben Geldenhuis
- Email: ebeng@tituscivil.com.au
- Phone: 0401 041 195



## CONSTRUCTION OF WARWICK LANDFILL CELL 4 FOR SOUTHERN DOWNS REGIONAL COUNCIL

### Scope of Works

- Bulk earthworks including excavation of rock, soil and waste, stockpiling and handling of spoil
- Preparation of subgrade and construction of a 300 mm select fill layer across cell floor and batters
- Installation of geosynthetic layers including GCL, HDPE geomembrane, separation, protection and erosion control geotextiles
- Construction of leachate collection system including perforated and non-perforated pipes, drainage aggregate, sump and pump
- Installation of temporary stormwater, sediment and erosion controls and construction of temporary bunds
- Construction of access, laydown and safe working areas within an operational landfill
- Coordination with CQA consultant, survey, geotechnical testing and quality assurance requirements
- Final covering, shaping, hydroseeding and rehabilitation of disturbed areas to meet finished surface design

30,000m<sup>3</sup> bulk excavation 22,325m<sup>2</sup> of liner deployed



### Project Achievements

- Delivered the project 1.5 months ahead of schedule.
- Optimised the construction program through early procurement and in-plant sampling/testing of geosynthetic liner materials.
- Completed GCL and HDPE liner installation prior to major wet-weather impacts, reducing risk and protecting construction quality.
- Used drone survey technology to improve accuracy of conformance checks, volume tracking and reporting.
- Achieved zero defects at the final walkthrough with the Client and Superintendent.
- Completed 30,000 m<sup>3</sup> of rock excavation, significantly exceeding expected quantities while maintaining program performance.

### Key Personnel

- Technical Expert: Ben Wedlock
- Project Manager: Oliver Donald
- Construction Manager: Daniel Grundy
- Site Engineer: Mark Aldava
- Supervisor: Lawrence Christie

### Referee

- Clients Representative: Eben Geldenhuis
- Email: ebeng@tituscivil.com.au
- Phone: 0401 041 195



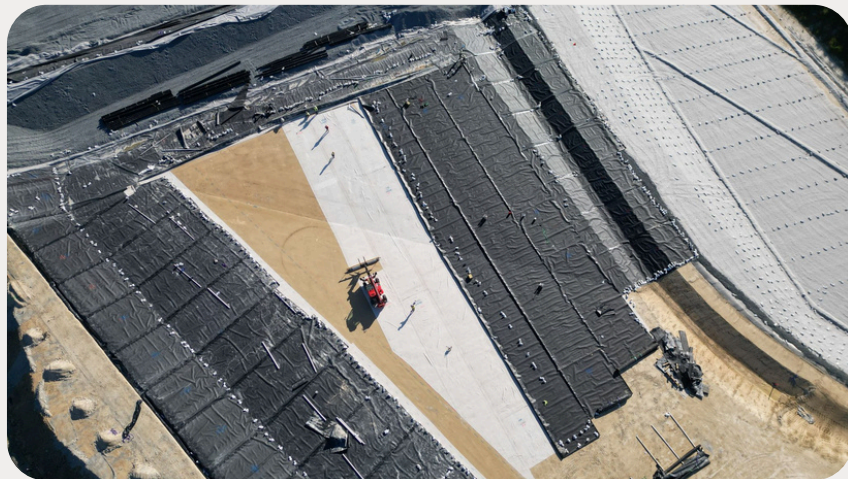
## REEDY CREEK CELL O PIGGYBACK LINER SYSTEM AND LEACHATE TANKS

FOR CITY OF GOLD COAST

### Scope of Works

- Clearing, grubbing, and removal of unsuitable materials
- Bulk earthworks: excavation, filling, subgrade preparation, and bund construction
- Placement of engineered fill, clay, bridging layers, and road base
- Construction of perimeter and internal bunds
- Installation of geosynthetics (GCL, LLDPE liners, geotextiles)
- Construction of landfill gas collection and venting system
- Construction of leachate collection system (HDPE pipes, sumps, manholes, drainage aggregate)
- Construction of stormwater management systems (drains, culverts, headwalls, outlets, chutes)
- Construction of access roads, ramps, and hardstands
- Supply and installation of concrete structures (pits, sumps, bunds)
- Progressive revegetation and finishing works (topsoil, turf, hydroseeding, maintenance)
- Design, supply, and construction of two 1ML steel panel tanks with PVC liners and corrosion-resistant roofs
- Installation of tanks within a concrete bunded area (110% capacity)
- Associated infrastructure: valves, piping, sumps, hardstands, shelters, stairways, electrical monitoring
- Connection to Council's stormwater and sewerage networks
- Bunded truck pump station, hazardous area signage, SCADA integration, and visual level indicators

120,000m<sup>3</sup> of earthworks 120,000m<sup>2</sup> of liner installed



### Project Achievements

- Expansion of project scope to include the design, supply, and construction of two 1-megalitre steel panel leachate tanks with full associated infrastructure, enhancing site capability and future adaptability.
- Maintained a strong, collaborative working relationship with Council, ensuring open communication and effective project delivery.
- Maintained an exemplary safety record throughout the project, with no lost time injuries or major incidents.
- Achieved all major construction milestones on or ahead of schedule, minimising disruption to ongoing landfill operations.
- Implemented sustainable practices such as progressive revegetation, material reuse where possible, and minimisation of construction waste.

### Key Personnel

- Construction Manager: Daniel Rose
- Project Manager: Ben Wedlock
- Project Engineer: Jordon Thomson
- Site Supervisor: Troy Aberdeen

### Referee

- Client's Representative: Peter Kelly
- Mobile: 0414 660 381
- Email: PRKELLY@goldcoast.qld.gov.au

\$ 21.1M

Jun 2024 - Nov 2025

Gold Coast, Qld



## TI TREE LANDFILL CELL 7 CONSTRUCTION

FOR VEOLIA

### Scope of Works

- Clear and grub the designated work area.
- Perform cut and fill earthworks to reach the top of clay (liner level).
- Excavate sub-base for groundwater underdrains, geogrid type A, and sumps (where specified).
- Shape the perimeter, including the northern plug, using cut and fill earthworks.
- Remove the existing cap over the monocell.
- Supply and placement of a clay layer and geosynthetic clay liner
- Supply and install the HDPE and LLDPE geomembrane liners
- Connect to the existing Cell 1 clay liner and geosynthetics.
- Supply and install protection geotextile and construct the anchor trench.
- Supply and place leachate drainage aggregate, drainage pipes, separation geotextile, cover soil, other associated geosynthetics, and anchor trench material.
- Design, supply, and install a leachate pump and ring-main piping to the existing leachate management system.
- Supply and install stormwater drainage infrastructure as specified.
- Supply and install surface treatments, including turf, topsoil, and hydromulch as specified.

250,000m<sup>3</sup> of earthworks 280,000m<sup>2</sup> of liner installed



### Project Achievements

- Seamlessly tied new liner system into the existing monocell, overcoming foundation and water ingress challenges.
- Facilitated collaboration between three external parties, ensuring alignment across design, construction, and compliance.
- Used telebelts, staged geosynthetic placement, and adapted excavation techniques for steep batters and variable ground conditions.
- Due to the successful delivery of the Cell 7 leachate liner system Hazell Bros was subsequently awarded the Cell 8 project at the Ti Tree Bio-Energy Facility. This continuation reflects the client's confidence in our capability, quality, and commitment to delivering critical infrastructure in challenging operational environments.

### Key Personnel

- Technical Expert: Ben Wedlock
- Project Manager: Cody Bradstreet
- Project Engineer: Viral Soni / Jordan Black
- Site Engineer: Amendra Perera
- Supervisor: Kurt Kachel / Brett Carberry

### Referee

- Clients Representative: Hamed Sheikhpour
- Email: hamed.sheikhpour@veolia.com
- Phone: 0447 770 732

\$ 19.9M

Mar 2024 - Oct 2025

Ipswich, Qld



# TESTIMONIAL



## CITY OF GOLDCOAST™

### Testimonial for Hazell Bros

As the Superintendent for the Cell 7 Leachate Liner System project at Stapylton Landfill, I had the pleasure of working closely with Hazell Bros (HB). Their performance on this project was outstanding, and I'm thrilled to support their nomination for the Collaborative Project of the Year.

From the start, HB showed exceptional leadership and a clear, shared vision for success. Their commitment to understanding and appreciating the drivers, motives, roles, and constraints of all stakeholders was evident throughout the project. They took the time to understand the Council's operational constraints and goals, such as maintaining uninterrupted landfill services and adhering to environmental compliance requirements. Their comprehensive traffic management plans ensured both construction efficiency and public safety.

Their flexibility and openness to change and compromise were demonstrated when they identified and resolved a critical issue with the leachate connection system. By engaging with the Council's waste management team and design consultants, HB developed a revised solution that kept the project on schedule and met environmental standards. HB's proactive measures, like applying a soil stabiliser to the clay liner during the Christmas shutdown, led to a significant reduction in rework before liner installation, showing their foresight, efficiency, and commitment to project continuity.

Additionally, HB's coordination for the geosynthetic liner system was a game-changer. They tackled outdated Victorian specs that required testing every roll of the liner materials. By negotiating with us to adopt more current New South Wales and South Australian guidelines, they cut the testing from 100 rolls to just 10. This move not only reduced project costs significantly but also ensured the project was aligned with the latest standards, boosting overall efficiency. It's worth noting that Queensland landfill specifications are currently being developed, making HB's proactive approach even more valuable.

In conclusion, Hazell Bros exemplified the power of true collaboration on the Cell 7 Stapylton project. Their unwavering commitment to shared problem-solving, innovation, and high-quality outcomes sets a new benchmark for landfill construction in Queensland. I'm confident in supporting their nomination for the Collaborative Project of the Year.

Regards

#### Peter Kelly

Senior Contracts Governance Officer/Superintendent's Representative  
Business Services

City of Gold Coast

M: 0414 660 381

PO Box 5042 Gold Coast Mail Centre Qld 9726

[cityofgoldcoast.com.au](http://cityofgoldcoast.com.au)

— **PETER KELLY**, Senior Contracts Governance Officer/  
Superintendent's Representative, City of Gold Coast



## CONSTRUCTION OF CELL 7 STAPYLTON LANDFILL FOR THE CITY OF GOLD COAST

### Scope of Works

- Bulk earthworks, cut to fill and import
- Supply and Installation of clay liner.
- Supply & Installation of containment system:
  - Geosynthetic clay liner, HDPE 2.0mm, Cushion geotextile, Leachate Drainage Aggregate.
  - Leachate collection pipework and valves (180 & 315mm dia PE pipes) and connection of leachate collection system into existing sump
  - Installation of temporary edge bunds to facilitate future cell connectivity.
- Construction of new perimeter access road
  - Strip, cut to fill formation and prepare subgrade.
  - Supply & Install of 300mm of 2.3 Road base pavement.
  - Installation of drainage crossing (3 x 600dia PE pipes)
  - Installation of edge protection and roadside furniture
  - Formation of clean water diversion drain (440m), lined with geotextile, topsoil and turf
  - Diversion of dirty & clean water drainage



### Project Achievements

- Deployment of 70% of the drainage aggregate directly to the floor of the cell with the telebelt, avoiding unnecessary strain and contamination of the aggregate.
- Worked with the client to achieve functional leachate connection designs that aligned with the unexpected conditions onsite by facilitating redesign of workshops and proposing alternative approaches that progressed the works.
- Aligning the delivery, sampling and testing of internationally procured lining materials to align with the clients tight program constraints

### Key Personnel

- Project Manager: Ben Wedlock
- Project Engineer: Jordan Thompson
- Supervisor: Kurt Kachel
- Safety Advisor: Jamie Fennell
- Environmental Advisor: Matt Gil

### Referee

- Clients Representative: Peter Kelly
- Phone: 0414 660 381
- Email: [PRKELLY@goldcoast.qld.gov.au](mailto:PRKELLY@goldcoast.qld.gov.au)



80,000m3 bulk earthworks



45,000m2 liner installed



\$ 7.86M



Aug 2023 - May 2024



Gold Coast, Qld



# MARYBOROUGH LANDFILL: CELL 9A CONSTRUCTION

FOR FRASER COAST REGIONAL COUNCIL

## Scope of Works

- Excavation and controlled reburial of asbestos-contaminated waste material.
- Execution of multiple subgrade treatments to meet landfill engineering requirements.
- Construction of bridging layers using high-specification, locally sourced quarry products.
- Management of variable groundwater and leachate conditions throughout excavation and construction phases.
- Installation of a multi-layer geosynthetic lining system comprising GCL, LLDPE, and geotextiles.
- Coordination of construction activities adjacent to live landfill operations, maintaining uninterrupted public waste transfer access.
- Integration and protection of existing landfill gas and leachate extraction infrastructure during works.
- Engagement of third-party consultants for certification, quality assurance, and compliance supervision.
- Execution of erosion and sediment control measures with all runoff captured internally for client-managed disposal.
- Sequencing of complex liner installation works based on clay characteristics and engineered drainage flow paths.

35,000m<sup>3</sup> of contaminated waste 0 liner leaks or defects



## Project Achievements

- Successfully sourced and utilised locally available, high-specification materials including high-quality clays, general fills, and specialised aggregates for groundwater and leachate systems.
- Resolved constructability challenges by working closely with the design team to refine methodologies and ensure safe, practical execution.
- Provided technical guidance to educate the client and stakeholders on landfill construction processes, improving collaboration and decision-making.
- Prevented clay shrinkage during liner installation in extreme summer conditions through proactive moisture management and timing strategies.
- Coordinated liner installation within a strict 48-hour window following final trimming, maintaining material integrity and program alignment.
- Applied stabilisation techniques to hydrate clay above optimum moisture content, achieving a consistent and compliant liner surface.
- Engagement of Indigenous business representing 5.23% of total contract value.

## Key Personnel

- Project Manager: Ben Wedlock
- Senior Project Engineer: Keith Harris
- Project Engineer: Mark Aldava
- Supervisor: Lawrence Christie
- Safety Advisor: Jamie Fennell
- Environmental Advisor: Matt Gil

\$ 17.14M

Jan 2023 - Dec 2024

Maryborough, Qld



# NOOSAVILLE LANDFILL: CELL EXPANSION AND CELL 1.1 CAPPING

FOR NOOSA SHIRE COUNCIL

## Scope of Works

- Expansion of Cells 1.1 & 2.2, including tie-in to existing liner systems.
- Placement of high-quality clay subgrade, GCL, LLDPE, geotextile, drainage aggregate, and leachate collection system.
- Construction of SW5 stormwater drain and HES basin, including 750m of clean water drain and 500m of dirty water drain.
- Installation of 2,900m<sup>2</sup> of clay and concrete lining for the HES basin, plus associated access roads and stormwater infrastructure.
- Permanent capping of Cell 1, including 8,000m<sup>2</sup> of surface profiling, BGM, drainage net, Unigrind, and subsurface/LFG drainage systems.
- Staged construction with active landfill operations maintained throughout.
- Excavation, treatment, & stockpiling of site-won materials for reuse.
- Compliance testing and installation of imported earth fill and geomembrane liners.
- Coordination of site traffic, stockpile zones, and operational waste transfer activities.
- Landscaping works including topsoiling, turfing, tree planting, and 13 weeks of establishment maintenance.

30,000m<sup>3</sup> clay placed 3,000m<sup>2</sup> concrete lined HES basin



## Project Achievements

- Successfully delivered works during one of the region's wettest recorded periods, managing over 2.5m of rainfall in 6 months without environmental incidents.
- Adapted to significant scope variations by collaborating with the design and delivery team to revise and rescope the project within budget.
- Achieved zero liner leaks or defects across all constructed areas.
- Implemented a stabilisation strategy to hydrate clay above optimum moisture content, ensuring consistent and compliant liner installation.
- Delivered liner installation within a strict 48-hour window following final surface preparation.
- Secured client approval for a major redesign, resulting in a larger, safer, and more manageable lined landfill cell.

## Key Personnel

- Project Manager: Ben Wedlock
- Project Engineer: Ankit Subedi
- Supervisor: Peter Hall
- Safety Advisor: Jamie Fennell
- Environmental Advisor: Matt Gil

## Referee

- Clients Representative: Cody Johnston
- Phone: 0476 806 489
- Email: [Cody.Johnston@noosa.qld.gov.au](mailto:Cody.Johnston@noosa.qld.gov.au)

\$ 8.57M

Dec 2021 - Dec 2022

Noosa, Qld



# CONSTRUCTION OF WARWICK LANDFILL CELL 3

FOR SOUTHERN DOWNS REGIONAL COUNCIL

## Scope of Works

- Clearing and preparation of the designated landfill cell work area.
- Bulk excavation and engineered fill to form the base of landfill cells 3A and 3B, and Dam 10.
- Stockpile management for long-term material storage and reuse.
- Earthworks construction of landfill base and batter liners to design profiles.
- Earthworks construction of Dam 10 spillway, including clay and structural fill placement.
- Supply and installation of geosynthetic liner system, including HDPE geomembrane across cell base and batters.
- Installation of leachate collection sump and side riser at the north-eastern corner of the landfill cell.
- Design and construction of leachate pump system and conveyance infrastructure to the tank farm.
- Design and installation of an irrigation system from Dam 10 to adjacent site areas.
- Installation of perimeter fencing around the landfill cell and stockpile zones.



## Project Achievements

- Hazell Bros hosted a site investigation session for the Darling Downs / South West Regional Waste Group, showcasing best-practice landfill cell construction to representatives from eight Queensland councils.
- Successfully challenging the design to eliminate "high spec" clay layers and implement a lower spec clay combined with an additional layer of GCL.
- Managing interstate subcontractors with a lack of resources due to border restrictions.
- Project completed 1 week ahead of PC date.
- Using the telebelt to deploy the aggregate enabled zero leaks detected in the lined surfaces.
- Strong working relationships developed between Principal, Superintendent and Hazell Bros.

## Key Personnel

- Project Manager: Ben Wedlock
- Site Engineer: James Morrow
- Supervisor: Kurt Kachel
- Safety Advisor: Jamie Fennell
- Environmental Advisor: Matt Gil

## Referee

- Clients Representative: Nicole Collett
- Email: nicole.collett@sdrc.qld.gov.au
- Phone: 0418 182 725

 35,200m3 of excavation  83,900m2 geotextiles placed



\$ 3.59M

 Dec 2020 - Oct 2021

 Warwick, Qld



# CONSTRUCTION OF LANDFILL LINER SYSTEM

FOR THE CITY OF GOLD COAST

## Scope of Works

- Construction at 3 landfill sites concurrently: Stapylton Cell 6, Reedy Creek Cell 2A/2B
- Site establishment and survey control.
- Clearing, grubbing and stripping of unsuitable material.
- Bulk earthworks to shape the cell footprints and prepare subgrade.
- Construction of earthen layer.
- Excavation and backfilling of anchor trenches.
- Supply and installation of geosynthetic clay liner (GCL).
- Supply and installation of HDPE geomembrane liner including welding and testing.
- Placement of cushion geotextile over geomembrane.
- Installation of leachate collection pipework and connections to existing systems.
- Placement and trimming of gravel drainage layer.
- Installation of separation geotextile over drainage layer.
- Construction of temporary/permanent bunds where required.
- Stormwater management controls including diversion drains and erosion/sediment measures.
- Completion of quality assurance testing, inspections and as-constructed surveys.

 75,000m3 of earthworks  3 landfill cells completed



## Project Achievements

- Delivered all liner system works ahead of the contractual Practical Completion date, ensuring early access for landfill operations.
- Achieved excellent quality outcomes, including a fully compliant baseliner and no defects identified during post-installation liner integrity testing.
- Successfully managed construction on a live landfill site, maintaining safe operations, seamless interface with active waste cells and zero operational disruptions.
- Implemented effective environmental controls, preventing sediment runoff, controlling dust, and maintaining compliance with requirements.
- Overcame complex sequencing and staging challenges, including safe connections into existing landfill cells and temporary bund management, without delays or incidents.
- Shortlisted for a CCF Earth Award, recognising the project's high-quality delivery, innovation and industry-leading environmental and construction practices.

## Key Personnel

- Project Engineer: Ben Wedlock
- Operations Manager: Simon Barr
- Supervisor: Richard Rafferty
- Supervisor: Michael Hay

\$ 4.8M

 Jul 2015 - Feb 2016

 Gold Coast, Qld



## WOODFORD WASTE TRANSFER STATION - WEIGHBRIDGES CONSTRUCTION FOR MORETON BAY CITY COUNCIL

### Scope of Works

- Remove existing fencing, asphalt, redundant services and dispose of waste and spoil off-site.
- Complete cut/fill earthworks and improve subgrade with imported fill and geocomposites.
- Install piled foundations for the weighbridge and gatehouse, including bridging slabs.
- Install stormwater drainage, pits, headwalls and sewer holding tank.
- Build pavements, asphalt, concrete slabs, kerbs, islands, line marking and signage.
- Supply and install 20m x 3.5m weighbridge with load cells, wiring, testing and certification.
- Install modular gatehouse with services, comms, CCTV and internal fit-out.
- Install off-grid solar PV system with battery storage and backup generator.
- Install plant room, fire services tank, rainwater tank and associated electrical equipment.
- Install solar-powered CCTV, conduits, pits and cabling
- Complete landscaping, fencing, reinstatement and final commissioning with As-Constructed data.



### Project Achievements

- Successfully removed over 7,666 m<sup>3</sup> of landfill waste (a substantial increase from the original 442m<sup>3</sup> allowance) without adding time to the program, and the project still finished within the contractual period.
- Delivered a major design improvement by replacing the original driven pile system with engineered bridging slabs, reducing risk, avoiding costly pile obstructions in landfill and improving constructability.
- Provided a cost-effective alternative for the plant room by proposing a refurbished shipping container, offering long-term asset protection and reducing cost for Council.
- Maintained continuous access to the facility despite needing to completely reconstruct the only public entrance.

### Key Personnel

- Project Manager: Brad Clark
- Project Engineer: James Morrow
- Supervisor: Lucas Guyer
- Safety Advisor: Jamie Fennell
- Environmental Advisor: Matt Gil

### Referee

- Clients Representative: Bijay Bhushal
- Phone: 0447 696 241
- Email: Bijay.Bhushal@moretonbay.qld.gov.au

7,000m<sup>3</sup> of waste removed 6,000m<sup>3</sup> of pavement placed



\$ 3.96M

Oct 2023 - Jun 2024

Woodford, Qld



## DAKABIN WASTE MANAGEMENT FACILITY - TRANSFER STATION DEVELOPMENT FOR MORETON BAY CITY COUNCIL

### Scope of Works

- Construct all civil works required for the new Transfer Station and hardstand area.
- Deliver all roadworks including new pavements, internal access roads and associated traffic arrangements.
- Complete bulk earthworks including approx. 40,000m<sup>3</sup> cut to fill and 750mm pavement construction using 2.5, 2.3 and 2.1 materials.
- Install all stormwater drainage including:
  - 4-cell 1500 x 2700 RCBC
  - Triple-cell 450 RCP
  - Water diversion works to protect environmentally sensitive areas.
- Construct retaining structures including block retaining walls, boulder walls and associated footings.
- Manage erosion and sediment control in line with IECA Best Practice requirements.
- Provide traffic management and maintain access throughout construction.

40,000m<sup>3</sup> cut to fill Completed project 8-weeks early



\$ 5.5M

Oct 2018 - May 2019

Dakabin, Qld



### Project Achievements

- Completed the project eight weeks ahead of the Contract Program, delivering early Practical Completion and strong schedule performance.
- Delivered the works under the original contract cost, resulting in overall savings to the client.
- Achieved major cost savings by redesigning elements (boulder walls, reduced pavement thickness, reduced cut-to-fill, using onsite material, simpler debonding method).
- Improved site performance through design enhancements (extra drains, extra RCP lines, guard rails, batter protection, bored piers, drainage chutes and speed humps)
- Delivered with no environmental issues and no LTIs.
- Maintained safe access with no traffic or community issues.

### Key Personnel

- Project Manager: Purwo Wibowo
- Supervisor: Kris Morrow
- Leading Hand: Mark Bayley
- WHS: Wayne Basson

### Referee

- Clients Representative: Noel McBride
- Phone: 0407 649 642

## FULL-SERVICE PLANT HIRE

Hazell Bros Plant Hire has gained an industry reputation as a reliable and highly responsive service, with the capacity to satisfy clients' needs through timely, high quality and cost-effective solutions.

Our clients go to us for confidence in our fleet of late-model, low hour, reliable, high-quality equipment backed by swift and experienced maintenance and support.

Our maintenance team offers onsite support capability, including fully equipped mobile field service technicians. We are always available to back up the equipment we supply.

## PLANT FLEET

Ensuring the most streamlined service for our clients, the plant depot is home to Hazell Bros head office, including the corporate team and an onsite inventory of parts to support the maintenance of our fleet.

Our fleet:

- Excavators
- Dozers
- Graders
- Dump Trucks
- Compactors
- Float / Haulage





LEVEL 4, 105 UPTON STREET,  
BUNDALL QLD 4217

07 5568 8000  
hazellbros.com.au  
ABN: 46 145 228 986